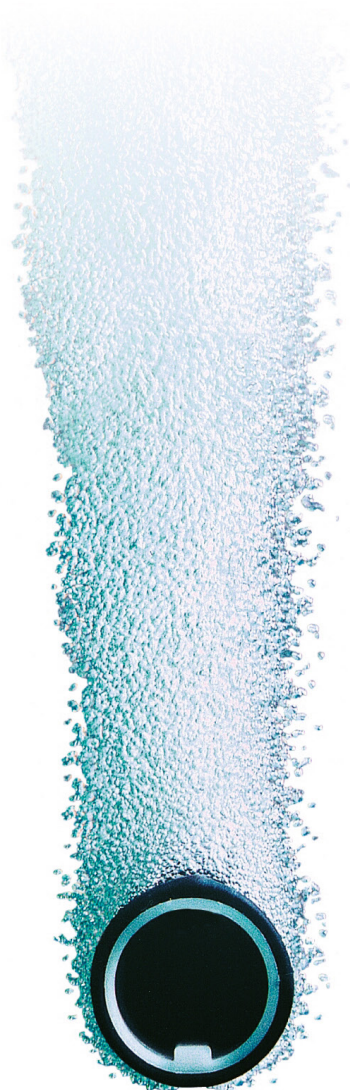


# Oxygen Transfer Technology

Efficiency by Design

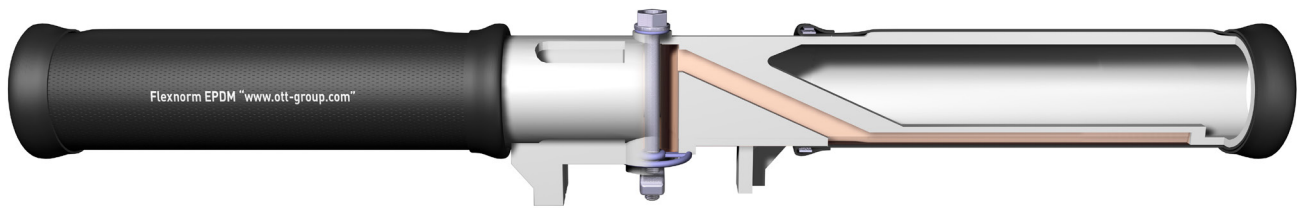


**OTT GROUP**



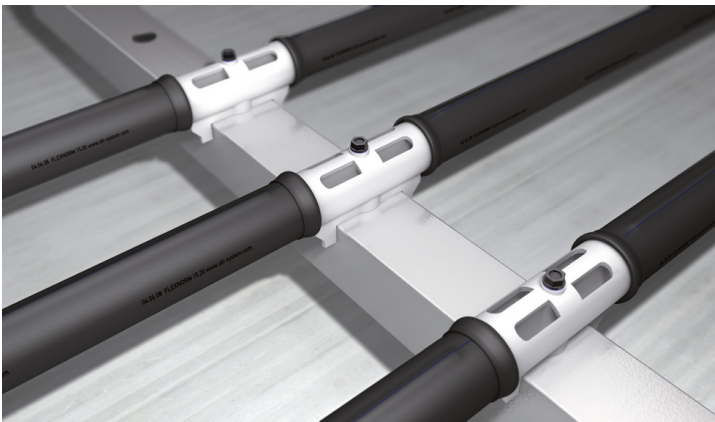
**MAGNUM<sup>®</sup>**

## MAGNUM®: Patented Technology for Rapid Installation and Minimum Piping Costs

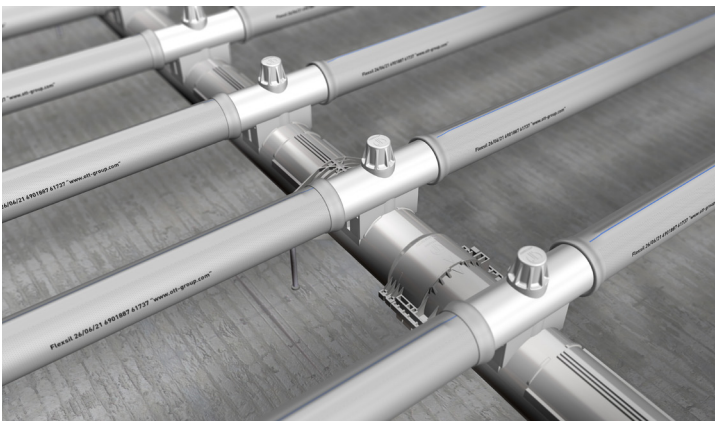


### The MAGNUM® diffuser is ideal for cost-efficient realization of air supply piping and diffuser installation.

Available in overall lengths up to 2200 mm (86.61"), **MAGNUM®** provides extremely high membrane surface area in a single diffuser. The overall membrane surface area required can therefore be realized with minimum installation time and air piping costs. Like all OTT tubular diffusers, **MAGNUM®** is equipped with patented engineering features including an integrated end-to-end air channel and a wrinkle-free membrane mounting ridge.

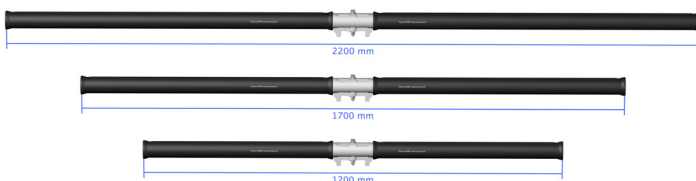


**MAGNUM®** diffusers can be installed on rectangular or round headers with 30 mm or 38 mm (1.18" or 1.50") outlet openings. We offer connectors for DN 80, 100 and 125 mm (3.15", 3.94" and 4.92") diameter round headers and 80, 100 and 120 mm (3.15", 3.94" and 4.72") rectangular headers.



We offer stainless-steel-free mounting hardware for installation on **AirRex®** headers.

All mounting components are made from engineering resin PP-GF and therefore suited for operating temperatures up to 120°C (248°F) and fully resistant to formic acid.



**MAGNUM®** diffusers are available in lengths of 1200, 1700 and 2200 mm (47.24", 66.93" and 86.61").

Custom lengths in accordance with your exact specifications can be supplied on request.

For **MAGNUM®** Installation Video and Installation Instructions, please visit our website [www.ott-group.com](http://www.ott-group.com)

## OTT Membranes for MAGNUM® Diffusers

At OTT, we are convinced that the performance, cost efficiency and service life of a wastewater aeration system are determined primarily by the quality of its membranes. We therefore manufacture our membranes with strict in-process quality control, closely monitoring key properties including pressure drop and bubble-pattern uniformity.

Customers use our diffuser membranes in highly diverse applications. These include conventional municipal and industrial activated basins, MBR and fixed-bed systems and even fish farms. Accordingly, OTT tubular membranes are available in a variety of customizable materials: EPDM (**FLEXNORM®**) and silicone (**FLEXSIL®**).



### **FLEXNORM® – the bioresistant workhorse**

**FLEXNORM®** membranes are recommended for aeration of municipal wastewaters. They are formulated with a biologically resistant plasticizer which reduces shrinkage and age-related stiffening.

Their high-quality formulation ensures long service life even at air temperatures up to 80°C (176°F).



### **FLEXSIL® – efficient and durable**

**FLEXSIL®** membranes are recommended for use with challenging wastewaters and in aeration systems designed for maximum efficiency and service life.

They are well suited for applications in deep basins, with heavily polluted wastewaters and/or at temperatures up to 140°C (284°F).

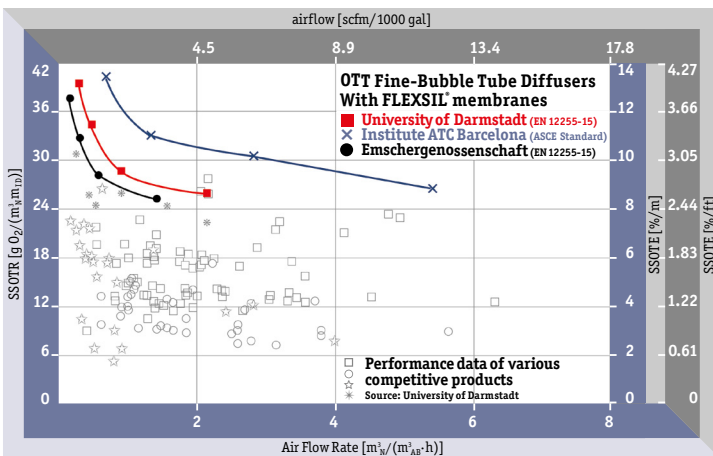
This membrane is not subject to age-related stiffening and exhibits outstanding chemical resistance to a wide range of chemicals, oils and greases.



# MAGNUM® Fine-Bubble Tube Diffusers from OTT: Unsurpassed Efficiency and Quality



Activated sludge basin with **MAGNUM® 2000 FLEXSIL®** tube diffusers



Oxygen transfer efficiency data from independent test institutes with full-floor coverage of basin. Complete test reports available on request.



Member of  
**German Water  
Partnership**

info@ott-group.com  
www.ott-group.com



**OTT GROUP**